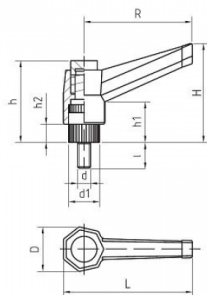


B1a Tencopolymer and Duroplast Handles and Grips - SERIES MRM Ratchet Handle, Button Type, Threaded Stud



Characteristics

Main Part Material: Black Technopolymer, fiberglass-reinforced, solvents, oils, greases and other chemical agents proof

Metallic Part Material & Finishing: Zinc Plated Threaded Steel Bolt

Other plastic components: Push-button in Technopolymer, black colour

Other components: Stainless Steel Return-Spring

Code	D	d	d1	H	h	h1	h2	l	L	R	Weight gr.	Packing Pcs.
B1MRM400510	17	05MA	12	42	33	15	7	10	50	40	14	20
B1MRM400520	17	05MA	12	42	33	15	7	20	50	40	16	20
B1MRM400530	17	05MA	12	42	33	15	7	30	50	40	18	20
B1MRM400615	17	06MA	12	42	33	15	7	15	50	40	16	20
B1MRM400620	17	06MA	12	42	33	15	7	20	50	40	17	20
B1MRM400625	17	06MA	12	42	33	15	7	25	50	40	18	20
B1MRM400630	17	06MA	12	42	33	15	7	30	50	40	18	20
B1MRM400815	17	08MA	12	42	33	15	7	15	50	40	19	20
B1MRM400830	17	08MA	12	42	33	15	7	30	50	40	22	20
B1MRM600615	22	06MA	15	42	37	14	8	15	70	60	22	20
B1MRM600620	22	06MA	15	42	37	14	8	20	70	60	22	20
B1MRM600625	22	06MA	15	42	37	14	8	25	70	60	22	20
B1MRM600630	22	06MA	15	42	37	14	8	30	70	60	24	20
B1MRM600640	22	06MA	15	42	37	14	8	40	70	60	26	20
B1MRM600650	22	06MA	15	42	37	14	8	50	70	60	28	20
B1MRM600815	22	08MA	15	42	37	14	8	15	70	60	26	20
B1MRM600820	22	08MA	15	42	37	14	8	20	70	60	26	20
B1MRM600830	22	08MA	15	42	37	14	8	30	70	60	28	20
B1MRM600840	22	08MA	15	42	37	14	8	40	70	60	32	20
B1MRM600850	22	08MA	15	42	37	14	8	50	70	60	36	20
B1MRM600860	22	08MA	15	42	37	14	8	60	70	60	40	20
B1MRM601020	22	10MA	15	42	37	14	8	20	70	60	34	20
B1MRM601030	22	10MA	15	42	37	14	8	30	70	60	40	20
B1MRM601040	22	10MA	15	42	37	14	8	40	70	60	50	20
B1MRM601050	22	10MA	15	42	37	14	8	50	70	60	60	20
B1MRM801020	27	10MA	19	59	49	20	9	20	95	80	52	20
B1MRM801030	27	10MA	19	59	49	20	9	30	95	80	56	20
B1MRM801040	27	10MA	19	59	49	20	9	40	95	80	62	20
B1MRM801050	27	10MA	19	59	49	20	9	50	95	80	68	20
B1MRM801060	27	10MA	19	59	49	20	9	60	95	80	72	20
B1MRM801220	27	12MA	19	59	49	20	9	20	95	80	62	20
B1MRM801230	27	12MA	19	59	49	20	9	30	95	80	68	20
B1MRM801240	27	12MA	19	59	49	20	9	40	95	80	76	20
B1MRM801250	27	12MA	19	59	49	20	9	50	95	80	82	20
B1MRM1001230	38	12MA	25	85	60	20	12	30	117	100	104	20
B1MRM1001240	38	12MA	25	85	60	20	12	40	117	100	113	20
B1MRM1001250	38	12MA	25	85	60	20	12	50	117	100	119	20

Code	D	d	d1	H	h	h1	h2	I	L	R	Weight gr.	Packing Pcs.
B1MRM1001430	38	14MA	25	85	60	20	12	30	117	100	123	20
B1MRM1001440	38	14MA	25	85	60	20	12	40	117	100	133	20
B1MRM1001450	38	14MA	25	85	60	20	12	50	117	100	142	20
B1MRM1001630	38	16MA	25	85	60	20	12	30	117	100	138	20
B1MRM1001640	38	16MA	25	85	60	20	12	40	117	100	152	20
B1MRM1001650	38	16MA	25	85	60	20	12	50	117	100	165	20