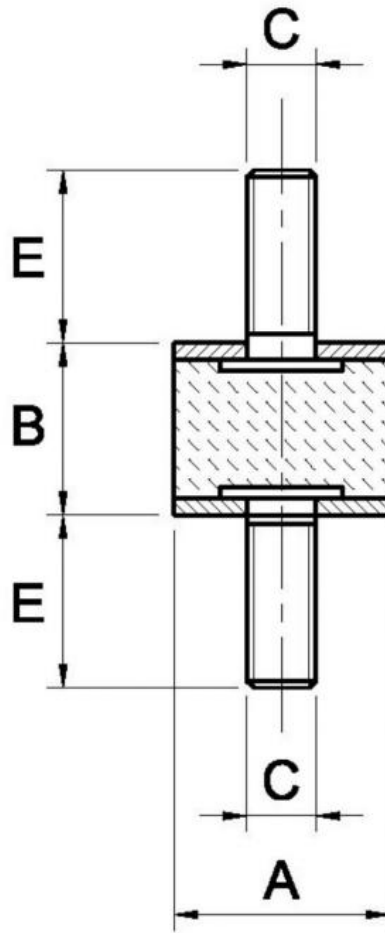


A1X AISI 304 Stainless Steel Cylindrical mountings - SERIES MMX AISI 304 Stainless Steel Type A (Double Male)



Characteristics

Main Part Material: NR/SBR Rubber Compound

Standard Hardness: 60 Shore A

Hardness Tolerance: +/- 5 SH

On request: Different Screw Lengths

Metallic Part Material & Finishing: Stainless Steel Screw and Washer AISI 304

Standard Thread: Screw pressed on the washer

Code	A	B	C	E	Max Compression Load daN	Max Shear Load daN	Packing Pcs.
A1MMX1515	15	15	M4	14	15	2	1
A1MMX2015	20	15	M6	16	34	4	1
A1MMX2520/6	25	20	M6	18	45	5	1
A1MMX3030	30	30	M8	23	61	7	1
A1MMX4030/8	40	30	M8	23	98	15	1