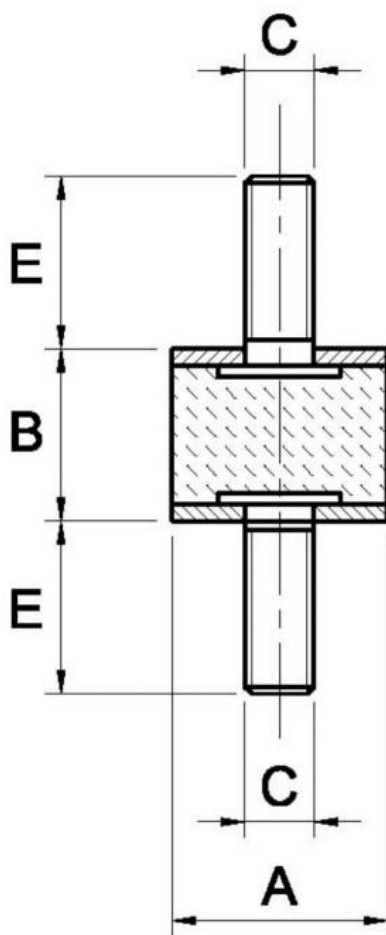


**A1 Zinc Plated Cylindrical Mountings** - SERIES MMT Soft Type A (Double Male)



**Characteristics**

**Main Part Material:** NR/SBR Rubber Compound

**Standard Hardness:** 45 Shore A

**Hardness Tolerance:** +/- 5 SH

**On request:** Different Screw Lengths

**Metallic Part Material & Finishing:** Zinc Plated Screw and Washer

**Standard Thread:** Screw pressed on the washer

Code	A	B	C	E	Max Compression Load daN	Max Shear Load daN	Packing Pcs.
A1MMT2520	25	20	M6	18	27	3,3	1
A1MMT3015	30	15	M8	23	34	3,8	1
A1MMT3020	30	20	M8	23	40	6	1
A1MMT3030	30	30	M8	23	37	4,7	1
A1MMT4030	40	30	M8	23	59	10	1
A1MMT4040	40	40	M8	23	73	10	1
A1MMT5030	50	30	M10	28	95	13	1
A1MMT5040	50	40	M10	28	88	11	1